

**Reliant Robin.  
You can't beat it for all round economy.**

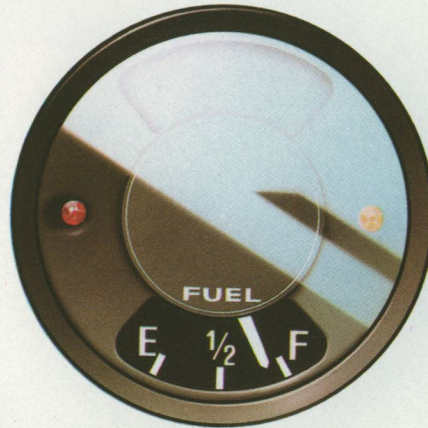




# Reliant Robin. Gives you the longest run for your money.

Take the Reliant Robin and compare it with any other car. And you'll see what motoring economy is all about.

The Robin gives you up to 70 mpg (24 kpl) on three star petrol — a massive saving in itself.



But that's only part of the story.

While other car owners are having to fork out £50 for their road tax, all you need find is £20.

When they moan about the cost of buying four new tyres, you can smile — because you only need three. And you'll need them less often because the lightweight Robin (approx 8 cwt — 406 kilos) goes easy on the tread.

If you have a bump it's not such a disaster. The glass fibre reinforced plastic (g.r.p.) body is cheap and easy to repair — unlike a metal-built car. Particularly a foreign one where replacement panels — and for that matter spares — leave a pretty big dent in any motoring budget.

And while rust is eating away the value of a conventional car, the Robin's coach built g.r.p. body stays looking good year after year.

Yet another reason why you get a longer run for your money.

## The quickest economy drive

When it comes to performance, the Robin doesn't even give other economy cars a sporting chance.

We can — and do — prove it with independent statistics. Compare the Robin's 0-60 in 16.1 seconds with the others on the performance chart.

Better still, get behind the wheel and see for yourself.

You'll leave them standing at the lights. And the punchy

40 bhp alloy engine has

plenty of power in reserve to cope with every motoring situation.

But it's not only the accelerator that responds quickly. With synchromesh on all four gears, you get a smooth, positive gear change. While the light precise steering gives you total control, not least when you're parking in a tight space.

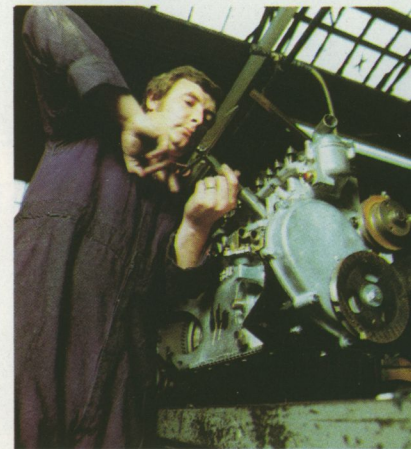
So you drive easy. And ride easy, thanks to the Robin's specially developed suspension.

## Built-in safety

Glass fibre reinforced plastic (g.r.p.) is extraordinarily safe. So safe, in fact, that's it's used for the bodies of many modern passenger coaches and the driver's cab of commercial vehicles as well as for motorcyclists' crash helmets.

Unlike metal, it'll shrug off slow speed bumps. But more important, in a collision, g.r.p. absorbs and dissipates the impact.

The Robin has other safety features too. Notably a sturdy steel chassis — almost unheard of nowadays — which adds to the overall strength. Seat belts, dual line braking and a rear fog guard are fitted as standard, and of course, the Robin complies with the latest U.K. National Type Approval safety legislation.



## Built-in reliability

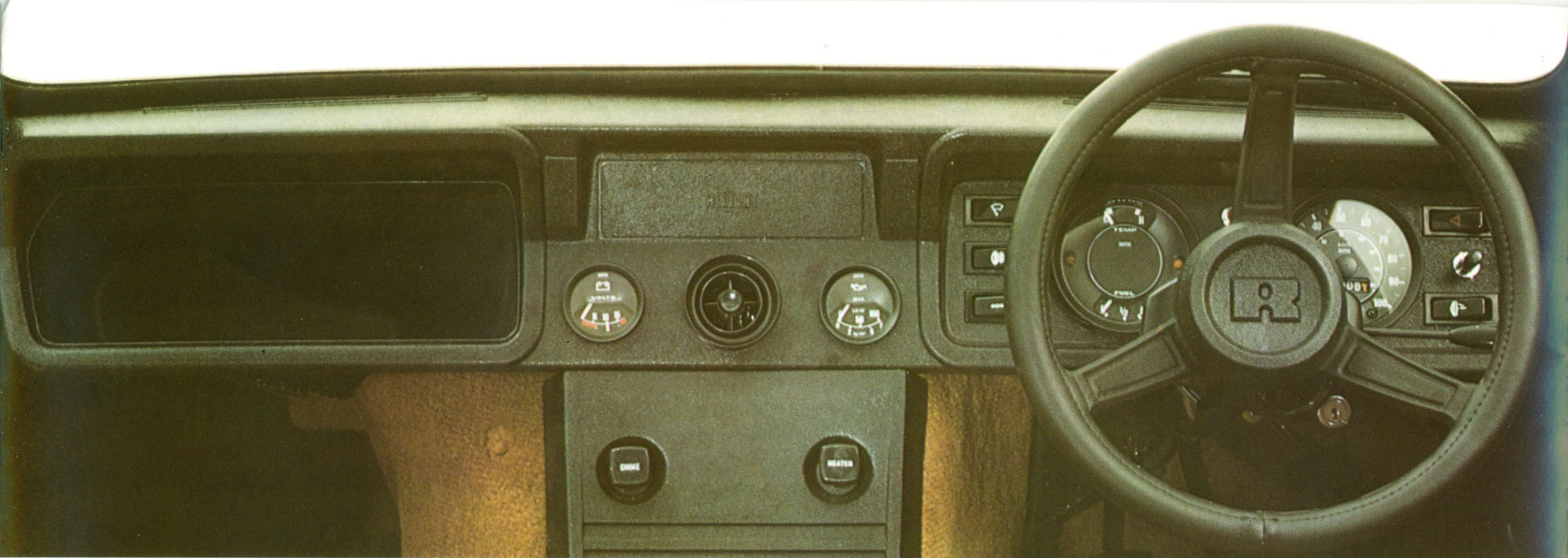
It's not just the non-rust body that's made to outlast conventional cars. The Robin's 850cc engine has a track record to match.

Developed by Reliant over the years, this high efficiency alloy unit is made to take all types of motoring in its stride. Which it does — without any strain at all.

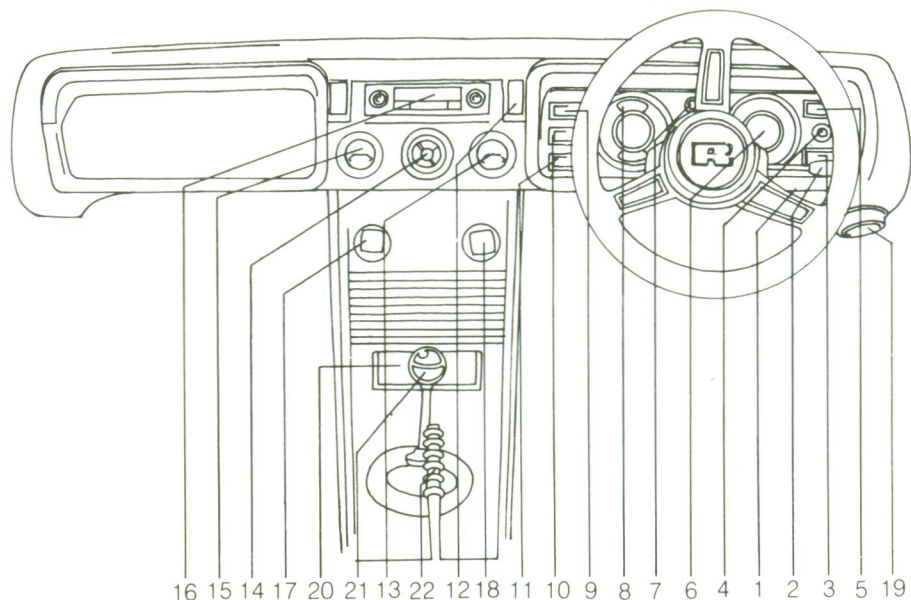
The Robin won't cramp your style. The thoughtfully designed fascia layout, sporty wheel and the column controls put you in total command.

PERFORMANCE FIGURES BY COURTESY OF "AUTOCAR"						
CAR	MINI 850	FIAT 126	FIESTA L	VW POLO	CITROEN 2 CV6	ROBIN 850
0-60 MPH TIME IN SECONDS	20.3 secs.	42.1 secs.	19.6 secs.	18.0 secs.	32.7 secs.	16.1 secs.









- |  |                                       |                   |
|--|---------------------------------------|-------------------|
| 1 Ignition switch  | 8 Combined fuel and temperature gauge | 16 Radio          |
| 2 Combined direction indicator, headlamp flasher, dipswitch and horn push. | 9 Windscreen wiper switch             | 17 Choke control  |
| 3 Auxiliary lights switch  | 10 Lights switch                      | 18 Heater control |
| 4 Windscreen washer button   | 11 Heater fan switch                  | 19 Heater vent    |
| 5 Hazard warning switch  | 12 Heated rear screen switch          | 20 Ash tray       |
| 6 Speedometer  | 13 Oil pressure gauge                 | 21 Gear lever     |
| 7 Hazard warning indicator   | 14 Fresh air vent                     | 22 Handbrake      |
|  | 15 Battery condition indicator        |                   |



Robin Saloon. Both the Standard and the Super have 8.5 cubic feet – 0.24 cubic metres luggage space. Fold the back seat down and you have 30 cubic feet (0.85 cubic metres)



Robin Estate. The Standard and Super versions of this compact estate open up to give an incredible 35.5 cubic feet – 1 cubic metre carrying space. 14.6 cubic feet (0.4 cubic metres) fully loaded and with all the passengers.



Robin Van. In Standard version only. With a maximum 50 cubic feet (1.4 cubic metres) and 5 cwt (254 kilos) payload, there's not much you can't fit in.

On the Super models, carpets throughout and plush velour seat coverings add a touch of luxury. While the seats themselves give you – and your passengers – a relaxing ride.

The Robin will take four adults with room to spare for the luggage.

If you've got a lot of luggage, simply fold down the back seat, open up the tailgate window (or the rear door on the estate) and pile it all in.

Or if you want the maximum carrying capacity, the Robin van is ideal. It gives you 50 cubic feet (1.4 cubic metres) of load space – but can be converted to take passengers if you wish.

When it comes to Robin's space and comfort, economy is the last word you'd think of.

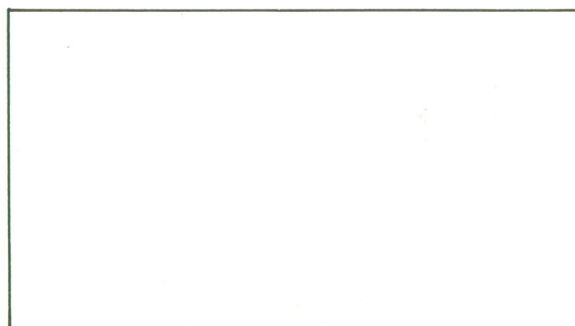
THE ROBIN HAS A NUMBER OF OPTIONAL EXTRAS: RADIO,\* CAST ALLOY WHEELS,\* FRONT PASSENGER SEAT (VAN ONLY). A COMPLETE RANGE OF ACCESSORIES AND "GENUINE" SPARE PARTS INCLUDING A REAR SEAT CONVERSION FOR THE VAN IS ALSO AVAILABLE FROM YOUR LOCAL RELIANT DEALER.

\*AVAILABLE ON SUPER MODELS ONLY









# RELIANT

Reliant Motor Company Limited,  
Tamworth, Staffordshire B77 1HN,  
England. Tel: Tamworth 4151.